

ANALOGUE PANEL METER : SiFML



Operating Manual

For Analogue Panel Meter type SiFML.

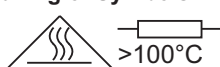
1.0 General :

This meter complies with International standard IEC 1010-1 Amendment 2 for safety and is conforming to routine test as per IEC 60051-1. The test equipment used is traceable to National/International standards.

Test Certificate :

This meter is found to be confirming to routine Test as per IEC 60051-1. The test Equipment used is traceable to National standards.

2.0 Meaning of Symbols :



>100°C

Caution! hot surface.



EU conformity mark

3.0 Safety specifications (IEC1010) :

- * Indoor use
- * Altitude up to 2000m
- * Temp. -10 to +55°C
- * Maximum relative humidity 80% for temperature up to 31°C decreasing linearly to 50% relative humidity at 40°C
- * Basic Insulation
- * Pollution degree 2
- * Installation Categories (over voltage category) : Size 96, 144 - 300V CAT III

4.0 Equipment Installation :

- * Due consideration should be given to space behind the meter to allow for bends in connecting cables.
- * Ensure that wires do not remain under tension.
- * The product do not have internal protection against overload & short circuit. Hence external safety protection should be provided. It is recommended to install protective device near equipment.
- * SiDSL meter millivolts ranges : Please use lead wires having total resistance of 35 milliohms or less.

5.0 Operation & Maintenance :

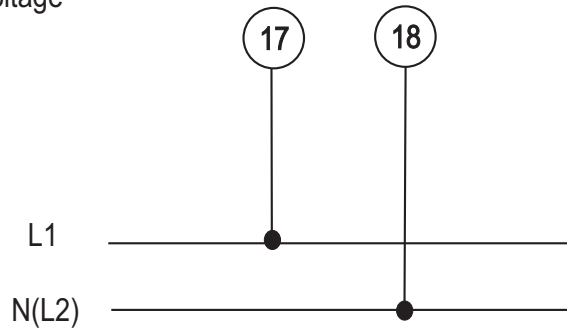
- * Equipment must be installed & maintained by authorised, qualified & trained person.
- * If equipment is used in a manner not specified by the manufacturer, the protection provided by the equipment may be impaired.
- * Instrument with damaged bezels or glasses must be disconnected from mains.
- * Back cover must be snapped into place for protection against accidental contact/shock.
- * Disconnect supply before replacing scales, bezels or glasses.
- * There are no user serviceable parts in this product. Please contact at the address given, for clarification, if any.

6.0 Equipment Rating :

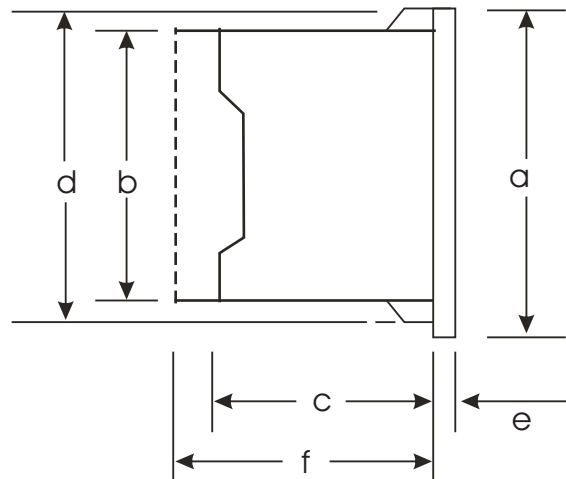
As per information on sticker and Dial of the instrument.

Connections:

AC Voltage



Dimensions



Dimensions (in mm)

	FML 96	FML 144
Bezel a	96	144
Case b	90	136
Depth c*	53	53
d	91.5	137.5
e	5.5	5.5
Cutout size	92 ^{+0.8}	138 ⁺¹
Weight approx.	0.45 Kg	0.6 Kg
Depth with back cover f **	64	64

Subject to change without notice!

2-60-006-00-00596_Rev. A_02/2015



Sifam Tinsley Instrumentation
 3105, Creekside Village Drive,
 Suite No 801, Kennesaw,
 Georgia 30144
 Contact Number: +1.404.736.4903
 Web: www.sifamtinsley.com

Sifam Tinsley Instrumentation Ltd.
 Central Buildings, Woodland Close,
 Old Woods Trading Estate,
 Torquay, Devon, England, TQ27BB
 Website: www.sifamtinsley.com/uk
 Contact Number: +44(O) 1803 615139
 E-mail: info@tinsley.co.uk