



Technical Data Sheet

Elapsed Time Meter



Elapsed Time Meters ETM 72/96 housed in moulded polycarbonate cases are suitable for the measurement of run time of machines, equipments and other devices.

Special Features

- Elapsed Time Meters (Hours Run Meters) are used to monitor ON/RUN time of plant/equipment which allows the user to check functions such as Production Efficiency, Cost and service period monitoring.
- The time is measured in increments of 0.01 to 99999.99 hour.
- Non resettable to prevent accidental resetting

Application

Elapsed Time Meters (Hours Run Meters) are used to monitor ON/RUN time of plant/equipment which allows the user to check functions such as Production Efficiency, Cost and service period monitoring.

AC Applications :- Business Machines, Control Panels, Compressors, Generators, Pumps, Air Conditioning

DC Applications :- Garden and Farm Equipments, Gen-sets, Construction Equipments.

Feature / Benefits

Elapsed Time Meters (Hours Run Meters) are used to monitor ON/RUN time of plant/equipment which allows the user to check functions such as Production Efficiency, Cost and service period monitoring.

The time is measured in increments of 0.01 to 99999.99 hour.

Non resettable to prevent accidental resetting.

Mechanical Data

Case details	Moulded square case suitable for mounting in Control Switchgear panels. Machinery consoles.
Case material	Glass filled polycarbonate, flame retardant and drip proof as per UL 94 V-0.
Front fascia	Glass
Colour of bezel	Black
Position of use	Vertical
Panel fixing	Swivel Screws
Mounting	Stackable in single cut out
Panel thickness	< 40 mm
Terminals	Hexagon studs, M4 screws And wire clamps E3

Electrical Data

Measured quantity Input quantity	Time in Hours AC or DC Voltage.
1) AC Voltages	100-125 V a.c, 200-250 V a.c.,380-440 V a.c., Frequency : 50/60Hz
2) DC Voltages	10/27 V (12, 24V) d.c., 38/58 V (48V) d.c.,90/132V(110V) d.c

Enclosure code (IEC 529)	IP 52 case, IP 00 for terminals without back cover IP 20 for terminals with back cover
Insulation class	Group A according to VDE 0110
Rated insulation voltage	660V
Proof voltage	2KV
Installation category	600V CAT III
Insulation resistance	> 50 Mohm at 500V d.c
Power consumption	0.75VA (110V AC)
(Burden)	1.70VA (415V AC) 80mW(12V DC)

Standard Measuring Ranges

1) AC Voltages	100-125 V a.c, 200-250 V a.c., 380-440 V a.c., Frequency : 50/60Hz
2) DC Voltages	10/27 V (12, 24V) d.c., 38/58 V (48V) d.c., 90/132V(110V) d.c

Reference Conditions

Ambient temperature	23°C +2°C
---------------------	-----------

Nominal range of use

Ambient temperature	0..50°C
Position of use	Nominal position $\pm 5^\circ$
External magnetic field	0.5 mT
Voltage	Rated Voltage $\pm 20\%$

Environmental Conditions

Climatic suitability	Climate category II as per IS :1248 (climatic class 3 according to VDE/VDI 3540)
Operating	-10 ... + 55°C
Storage temperature	-25 ... + 65°C
Relative humidity	< 75% annual average, non- condensing
Shock resistance	15g. 11ms
Vibration resistance	10-150-10 Hz / 0.15 mm 1.5 g at about 50 Hz.

Applicable Standards

Nominal case and cutout dimensions for	DIN 43700
Connections and Terminal markings for	DIN 43802
Terminal bolts / leads.	DIN 46200/46282
Clamp Straps for connections	DIN 46282
Safety Requirements and protective measures for electrical Indicating Instruments and their accessories	DIN40050/8-70, VDE 0110/11-72 VDE 0410/10-76 IEC 529, IEC 1010
Front frames for indicating measuring instruments Principle dimensions	DIN 43718
UL Compatibility	UL 94 V-0
Mechanical strength (Free fall test, vibration test)	IEC 51 VDE0411, part 1,sec. 43/44, IEC 1010

Options

Case

Front Facia	Antiglare glass
-------------	-----------------

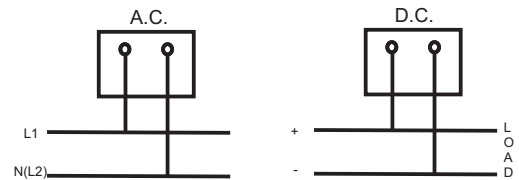
Color of bezel	Red, yellow, blue, white
position of use	on request 0°...180°
Dial	
Blank dial	Yes
Special markings	Numbering/Lettering

Accessories

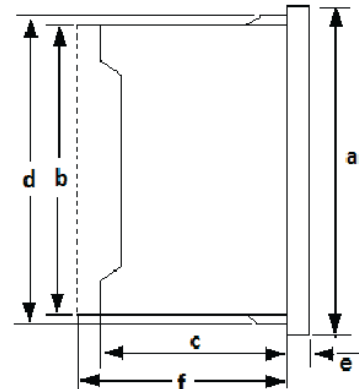
Safety Terminal protection

Full sized polycarbonate back cover to provide protection against accidental contact (hand and fingers) acc. to VDE 0410.

Connection Diagram



Dimensions



Dimensions (in mm)	ETM72	ETM96
Bezel	<input type="checkbox"/> 72	<input type="checkbox"/> 96
Case	<input type="checkbox"/> 66	<input type="checkbox"/> 90
Depth	<input type="checkbox"/> 53	<input type="checkbox"/> 53
	<input type="checkbox"/> 67.5	<input type="checkbox"/> 91.5
	<input type="checkbox"/> 5.5	<input type="checkbox"/> 5.5
	<input type="checkbox"/> 68±0.7	<input type="checkbox"/> 92±0.8
Cutout Size		
Depth with Back Cover	f** 64	64
Weight (approx.)	0.21 kg	0.28 kg

Ordering Information- Only For Representative Products

Size 72 x 72

Part No.	Description
ET74-016XXN1XAW0ST	100-125V AC, 50 Hz
ET74-046XXN1XAW0ST	220-250V AC, 50 Hz

Size 96 x 96

Part No.	Description
ET94-016XXN1XAW0ST	100-125V AC, 50 Hz
ET94-046XXN1XAW0ST	220-250V AC, 50 Hz

For more details and product codes, please contact our local office



Sifam Tinsley Instrumentation Inc.
3105, Creekside Village Drive,
Suite No. 801, Kennesaw,
Georgia 30144 (USA)
E-mail Id : psk@sifamtinsley.com
Web : www.sifamtinsley.com
Contact No. : +1 404 736 4903

Sifam Tinsley Instrumentation Ltd
Unit 1 Warner Drive,
Springwood Industrial Estate
Braintree, Essex, UK, CM72YW
E-mail: sales@sifamtinsley.com
Web: www.sifamtinsley.com/uk
Contact: +44(0)1803615139