



sifam tinsley
PRECISION INSTRUMENTATION

CATALOG

MULTIFUNCTION METERS

DIGITAL PANEL METERS

TRANSDUCERS & ISOLATORS

CURRENT TRANSFORMERS

ANALOG PANEL METERS

DIGITAL MULTIMETERS

CLAMP METERS

INSULATION TESTERS

TEMPERATURE CONTROLLERS

CONVERTERS & RECORDERS

SHUNTS

OUR COMPANY

Looking for high quality electrical measuring instruments, complying with international standards and the organization with world class customer service? Sifam Tinsley Instrumentation is exactly what you have in mind. All our products and processes, at Sifam Tinsley Instrumentation, are customer centric which means each of our products comes with the scope of being customized according to your requirements. Our relationship with the customer just begins with the sale of the products. We constantly strive to upgrade our products and services through process improvement and customer interaction.

OUR VISION


To be a leader in the world class electrical measuring instruments business. We aim to provide best technological products with highest quality service to all our customers

OUR MISSION

Sifam Tinsley Instrumentation is committed to be the best in class among the electrical measuring instruments manufacturers through our skilled employees, streamlined processes, state of the art manufacturing facilities, and aggressive research and development programs.

We are **Powered By Technology... Driven By Service...**



Sifam Tinsley Instrumentation Inc. 
3105, Creekside Village Drive,
Suite No. 801, Kennesaw,
Georgia 30144 USA
E-mail Id: psk@sifamtinsley.com
Web: www.sifamtinsley.com
Contact No. +1 404 736 4903

Sifam Tinsley Instrumentation Ltd. 
Central Buildings, Woodland Close,
Old Woods Trading Estate,
Torquay, Devon, England, TQ27BB
E-mail Id: sales@sifamtinsley.com
Web: www.sifamtinsley.com/uk
Contact No. +44 (0) 1803 615139



POWERED By TECHNOLOGY, DRIVEN By SERVICE

Alpha Series



Multifunction Meters

The Alpha series consists of multifunction meters with the LED & LCD display (touch operated capability). The meters are available with 1A, 5A current inputs & upto 500 Volts Line to Line (289 Volts Line to neutral) input voltage. They are capable of measuring important electrical parameters in 3 Phase 3 wire and 3 phase 4 wire network. Plug in Modules are available for pulsed output and RS 485 output.

Features:

- THD measurement ■ T-RMS Measurements ■ Onsite Programmable-3PH 3 Wire / 3PH 4 Wire - CT secondary 1A / 5A - CT primary and PT primary ■ Measures more than 61 parameters including V, I, Hz, KW, KVAR, THD, KWh (*Alpha 30) ■ RS-485 (Ethernet) connectivity ■ Universal AUX supply (40 – 300 V AC/DC AUX) ■ Optional outputs: Analog, Pulse and RS485 MODBUS ■ Auto Scrolling ■ Click Fit arrangement for easy installation ■ Low back depth ■ RPM measurement capability (*Alpha 20) ■ Phase reversal indication (*Alpha 40) ■ Hour run, ON hour, No. of interruptions ■ Min Max storage of parameters

Models:

- Alpha 10 ■ Alpha 20 ■ Alpha 30 ■ Alpha 40 ■ Alpha 40D ■ Alpha 45 ■ Alpha 50 ■ Alpha 70 ■ ND20 ■ N43

Beta Series



Digital Panel Meters

The Beta Series Consist of digital panel meters which are programmable and are used for the measurement of various parameters like AC, DC, Current, Voltage, Frequency & Temperature. They are available in the Following Sizes, 24X48, 24X96, 48X96, 96X96 With 3.5 digit, 4 & 4.5 digit ultra-bright LED display

Features:

- Auxiliary supply: 24, 110, 230 Volts A.C. or 5, 12, 24, 48, 110 Volts D.C.
- Changeable Unit Caption on front display ■ On-site decimal Point selection ■ Enclosure protection for dust and water ■ TRMS measurement ■ Ultra bright Red LED display ■ Multi range version ■ Scaling adjustment over wide range ■ On site programmable PT/CT ratios

Models:

- Beta 10P/20P/30P/40P ■ Beta Hz ■ Beta 50/60/70 ■ Beta 90 ■ Beta 90A/90B ■ Beta 90T ■ Beta G1 ■ Beta G2 ■ N30 (P,O,H,U) ■ NA3 ■ NA5 ■ NA6 ■ N27P

Theta Series



Transducers and Isolators

Theta Series Transducers consist of Current, Voltage, Frequency, Power & Multi function transducer series which convert the respective electrical quantity into a proportional DC Voltage or DC Current signal (which is load independent over a wide range). The Isolators primarily find it's application for isolation, amplification and conversion of DC Signals. The Theta series transducers are on-site programmable using front key and display or through RS 485 communication interface.

Features:

- 1/3 Phase, 2/3/4 wire programmable multi transducers ■ Meets requirements of international standard IEC688 for Accuracy ■ Insulation level of 3.7 KV/4 KV ■ Electrical isolation between all transducer connections ■ Option of bent transformation characteristics ■ Output short circuit & open circuit proof ■ Insulation level for Theta 40 is 5.6 kV ■ PC simulation ■ Measuring ranges in case of isolators are configurable with DIP switch and Potentiometer ■ Red LED indication for open or short circuit ■ Universal (AC/DC) Power Supply

Models:

- Theta 10A/10V ■ Theta 20A/20V ■ Theta Hz ■ Theta 30P ■ Theta 40 ■ Theta 50 ■ Theta 60I ■ Theta 60R ■ Theta 60M ■ P30U ■ P30c ■ P43 ■ P18D ■ P19

Anush/ Vista/ Sigma Series



Analog Panel Meters

The traditional panel meters are available under Anush, Vista & Sigma Series. They are available in rectangular and square types with AC, DC, and Rectified AC measurement. The meters are also available in 90° and 240° scale deflection range. The meters are capable of measuring AC current, Voltage, Power, Power Factor, DC current, voltage, etc. Anush & Vista Series are specially designed to meet the requirements of relevant ANSI standards.

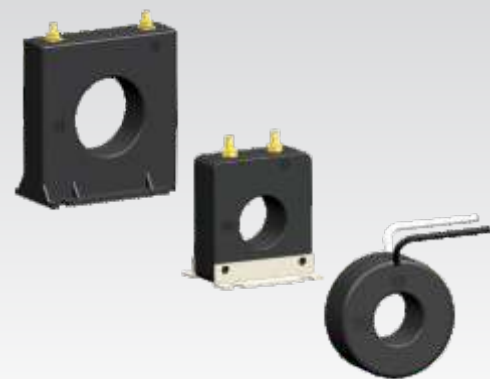
Features:

- Easy and quick interchangeable scale ■ Unique mounting system with easy replacement of glass and bezel ■ Knife edge pointer ■ Self-lifting terminal screw ■ Case with classic finish made of 10% glass filled polycarbonate (UL 94 V-0 approval) ■ Nearly linear scale for MI type meters ■ DIN meters available in 48, 72, 96, 144 sq.mm. ANSI meters available in 2½, 3½, 4½ inches.

Models:

- Anush Series ■ Vista Series ■ Sigma Series

Omega Series



Current Transformers

1. Split Core CTs - Omega series of split core transformers offers a cost effective and efficient method by which the current can be measured without the need to break the conductor, thereby reducing installation and commissioning time.

Features:

- Compliant with IEC 60044-1. BS7626
- Flame retardant grade enclosure (UL 94V-0)
- Operation free installation.
- Test Voltage 3 kV 50 Hz 1min.
- System Voltage 720V Max.
- Ratio ratings from 100/5A to 3000/5A.
- Available in 0.5, 1 & 2 accuracy class
- Insulation class: E

Models:

- Omega 10A ■ Omega 10B ■ Omega 10C ■ Omega 10D ■ Omega 10E

2. TW CTs - Sifam Tinsley's Omega TW series round type CTs are housed in robust case with classical finish. The case is made of polycarbonate, which is flame retardant and non-drip and confirms to international regulations UL 94 V-0.

Features:

- Available in 0.2s, 0.2, 0.5s, 0.5, 1, 3, 5 accuracy classes
- Cost effective Polycarbonate case current transformer
- Wide range of sizes available for different bus bar sizes
- Various mounting options like wall mounting, bus bar mounting, available.
- Wire sealable terminal covers.

Models:

- Omega 20A ■ Omega 20B ■ Omega 20C ■ Omega 20E ■ Omega 20F

3. ANSI CTs - The ANSI Metering Class transformers are intended for power monitoring applications where high accuracy and minimum phase angle error are required. They are specially designed to be compliant to relevant ANSI standards.

Features:

- Applicable standard : ANSI/IEEE C57.13
- Case: 10% glass filled polycarbonate, flame retardant grades classified UL 94V-0.
- Insulation Level: 600 Volts, 10KV BIL full wave
- Non-standard length possible if specified
- For all the SHT & SFT types terminals are brass studs No. 8-32 with one flat washer, lock washer & regular nut
- All the SHT & SFT models also available as SHL & SFL with leads
- For all the SHT types-mounting bracket kit when required

Models:

- Omega 30A ■ Omega 30B ■ Omega 30C ■ Omega 30D ■ Omega 30E



Lambda Series



Iota Series



Temperature Controllers

Controllers are designed for precise measurement and control of sophisticated systems where precise and accurate measurement & controlling actions are required. Controllers are available with wide range of sensor inputs, analog signals & resistance input. Available in single and dual input channels with additional auxiliary input facility.

Features:

- Smart PID functions & algorithms
- Soft Start Function
- Inbuilt RTC
- Easy programming through front keypad or software for programming of the devices
- User friendly interface and user access menu.
- Profile definition programming for sophisticated systems

Models:

- RE72 ■ RE92

Converters & Recorders

Iota series recorders are designed for measurement and recording of process and major electrical parameters which may be critical for the system and affect the process performance. Data recorded can be retrieved for after fault analysis. The recorders have facility to intake data either from Temperature Sensors, analog signals from the process transmitters (used for flow, pressure, humidity etc.). The recorders are facilitated with Analog channels & Modbus channels to ease the recording of data.

Features:

- Available with 24 channels
- High sampling rate
- User settable recording interval time
- Data Acceptance over Modbus Master & Slave concept
- Simple module functioning.
- Inbuilt FTP & Web Server
- Industrial Grade memory cards for effective data storage with fastest recording time interval.
- User access writes with password protection.

Models:

- N30B ■ KD7 ■ SM61 ■ PD8



Gamma Series



Digital Multimeters

The Gamma series consists of digital multimeters. They are capable of measuring electrical parameters like current, voltage, frequency, temperature, resistance, diode test and continuity test of the circuit respectively. They are used in industries as well as in laboratories for the testing purposes.

Features:

- Upto 300,000 digits and triple display
- Automatic terminal blocking system (ABS)
- PC interface with ST COM 100 software for Gamma 10 and Gamma 12
- TRMS measurement
- MIN MAX value storage
- Protective holster for rough duty
- Continuity test
- Power economizing circuit & Optional backlit display
- Peak Hold
- Min/Max function
- Analog Scale
- Auto and manual ranging mode
- Backlit

Models:

- Gamma 10
- Gamma 12
- Gamma 20
- Gamma 30
- Gamma 40
- Gamma 50
- Gamma 60
- Gamma 70

Delta Series



Clamp Meters

The Delta series consist of clamp meters and clamp CT's. This meters are basically used where the contacting terminal cannot reach the desired point for measurement. The meter has wide opening jaws with 180° rotational movement which makes it comfortable for the user to handle it during the measurement. By using clamp CT's, we can measure the electrical parameters above the normal range by use of normal digital multimeters easily.

Features:

- Large jaw opening of 55 mm with 180° rotation to avoid difficult measuring positions
- High accuracy for low current measurement
- Users selectable backlit (optional)
- Narrow housing for firm grip and easy to carry
- Null zero correction for low current measurement
- Analog scale and auto power off

Models:

- Delta 1000
- Delta 300
- Delta Clip A
- Delta Clip B



Zeta Series



Insulation Testers

The Zeta series consist of the insulation testers. Insulation plays a vital role in electrical field. Improper use of insulation in electrical system can collapse it. So, for determining proper insulation resistance values, insulation testers are used. Zeta series insulation testers are widely used in insulation resistance measurement for industrial applications such as motors, electrical panels, cables, telecom industry, defence and many more.

Features [Zeta 20 & 30]

- Broad insulation measuring range upto 2 GΩ
- Voltage measurement to 25 V to 600 V
- Hands free continuity testing
- Storage memory for last 50 readings
- Stop watch function & blow fuse indication
- Auto power off
- Pre selectable measurement time, limit check for insulation resistance measurement

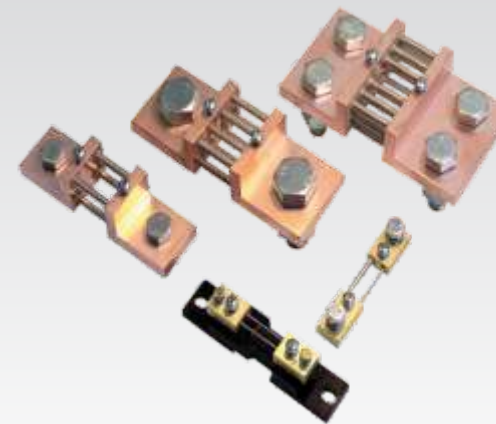
Features [Zeta 50/50K]

- Test Voltages to upto 5000 V
- Discharge of Capacitive Devices Under Test
- Measurement in accordance with EN61557 part 1 and 2/ IS 2992 (VDE 0413)
- Measurement Cables with Heavy-Duty Insulation & Needle Gauge with LEDs
- Voltage measurement upto 2000 V

Models:

- Zeta 20
- Zeta 30
- Zeta 50/ 50K

Kappa Series



Shunts

Kappa Series Shunts provide an accurate DC millivolt signal to drive ammeter indicators, overload protection and control devices, especially for higher amperage. They supply a voltage drop proportional to the DC current which is measured. The current passing through the shunt produces a proportional voltage drop. A moving coil instrument connected to shunt measures the voltage drop across the shunt terminals.

Features:

- Extension of D.C. current measuring ranges of moving-coil ammeters
- Accuracy class 0.5
- Shunts of 1...25 A ranges (and on request, B2 40...150 A) are fixed on an isolating base.
- The isolating base is adapted to be assembled on a 35 mm DIN rail
- On request, additional chemical coating are available: lakering, silver or nickel plating

